

Brochure

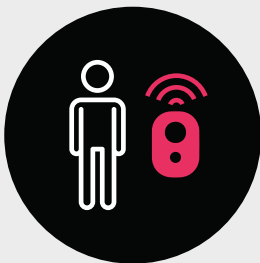
Maintain distance
with the **Social
Distancing Sensor**



Maintain distance more easily in the 1.5-meter society

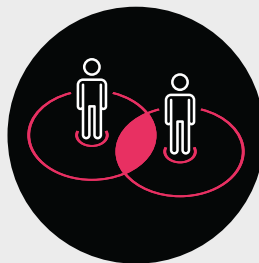
The Social Distancing Sensor (SDS) helps people remember to keep their distance from others. The SDS tag warns you by emitting a vibration, sound and light signal when you are too close to another person with a tag.

How does the SDS work?



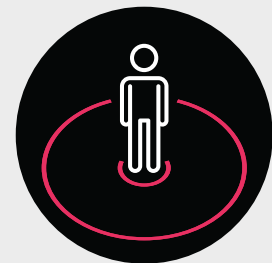
Step 1

Wear the SDS tag on a key-cord or an armband.



Step 2

The tag will emit a signal within 1.5 meters from another person with a tag.



Step 3

The signal stops as soon as the distance is at least 1.5 meters.

Link tags

With the SDS Base Station, you can easily link tags so certain persons can be near each other. These individuals will only receive a signal when a non-linked tag comes within 1.5 meters of their tag.





Specifications of the Social Distancing Sensor

- Compact and lightweight.
- Wearable with an armband around the upper arm or with a key-cord.
- Comes standard with a vibration, sound and light signal. Adjust the signals yourself with the SDS Access Point (available separately).
- Link tags with the SDS Base Station (available separately), so certain people can be near each other.
- Reliable distance measurement with ultra-wideband technology (accurate to 10 cm).
- Not related to a person so privacy is safeguarded.
- Splash-proof.
- Battery lasts 8-12 hours. Charging time of 2 hours.



Expand your options



SDS Access Point

With the SDS Access Point, you can link the SDS tags to your computer. This expansion allows you to:

- Adjust signals emitted by the SDS tags.
- Obtain insight into observed 'incidents' as well as each tag's battery status.
- Receive a warning if a tag has not been returned.



SDS Base Station

The SDS Base Station is a magnetic platform you use to link multiple tags.

- Interlink the platforms like a puzzle.
- Lay the tags on the platform.
- After 3 seconds, the tags are linked together.
- You can also switch tags on and off with this platform.



SDS Power Port 10

Charge multiple tags at the same time with this charger.

- Charging time is maximum 2 hours.
- 10 USB ports to charge 10 tags simultaneously.
- Awarded DOE Level 6 for energy efficiency.
- Includes 1.5-meter electricity cable.



SDS Power Port 5

Charge multiple tags at the same time with this charger.

- Charging time is maximum 2 hours.
- 5 USB ports to charge 5 tags simultaneously.
- Awarded DOE level 6 for energy efficiency.
- Includes 1.5-meter electricity cable.



**Make maintaining distance
between people easier**

Make sure people keep the correct distance from others in areas such as production locations, logistics environments, construction sites, healthcare institutions, amusement parks, and museums. Learn what [this distance sensor](#) can mean for you.

visit the SDS site >

www.socialdistancingsensor.nl



challenge  accepted.